



FORTUNE & COATES

The People's Estate Agent

<https://www.fortuneandcoates.co.uk>



FORTUNE & COATES



71 Plover Crescent, Harlow, CM17 0RZ

£235,000

Fortune and Coates are delighted to offer to the market this beautifully presented one-bedroom top floor apartment situated in the sought-after location of Plover Crescent, Gilden Park.

Upon entering, you are welcomed into a bright and spacious entrance hallway with access to a useful storage cupboard and all rooms throughout the home.

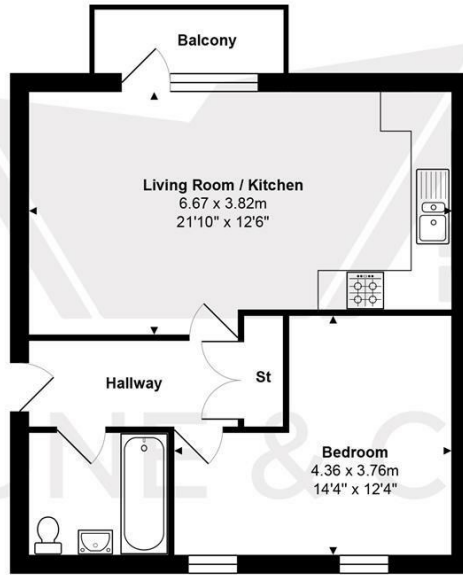
The heart of the property is the impressive open-plan living room/kitchen, a contemporary and versatile space flooded with natural light from French doors leading directly onto a private balcony. The kitchen is fitted with a range of modern grey wall and base units complemented by sleek white worktops and under cabinet lighting. It benefits from integrated appliances including an oven, hob fridge/freezer and dishwasher, alongside ample space for dining and entertaining.

Living room/kitchen 21'10" x 12'6" (6.67 x 3.82)

Bedroom 14'3" x 12'4" (4.36 x 3.76)

AGENT NOTE: The information provided about this property does not constitute or form part of an offer or contract, nor may it be regarded as representations. All interested parties must verify accuracy and your solicitor must verify tenure/lease information, fixtures & fittings and, where the property has been extended/converted, planning/building regulation consents. All dimensions are approximate and quoted for guidance only as are floor plans which are not to scale, and their accuracy cannot be confirmed. Reference to appliances and/or services does not imply that they are necessarily in working order or fit for the purpose.

Floor Plan

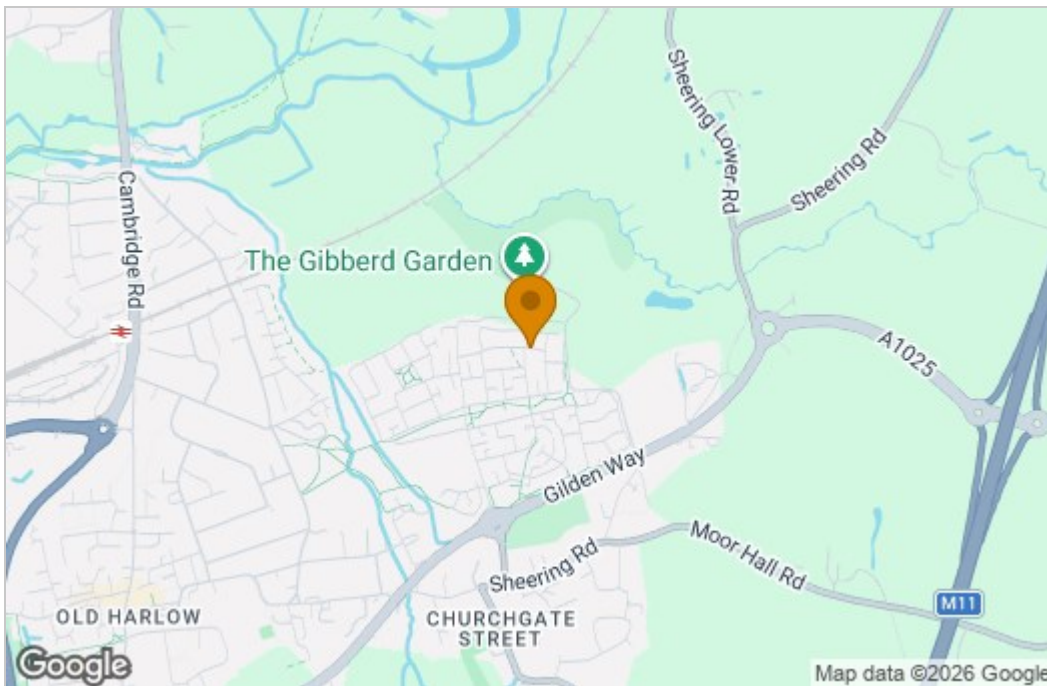


Total Area: approx. 48.5 m² ... 522 ft² (excluding balcony)

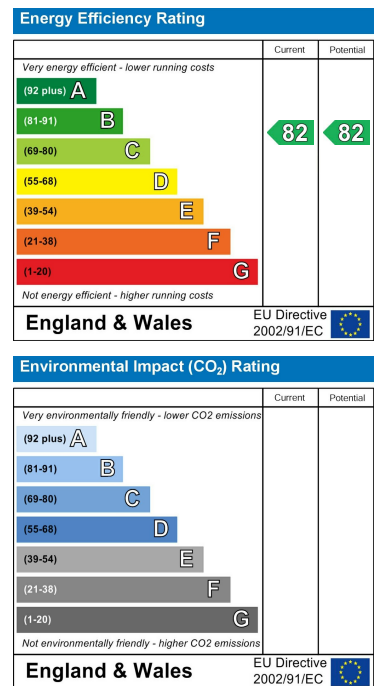
THE FLOORPLAN IS FOR ILLUSTRATIVE PURPOSES ONLY AND IS NOT TO SCALE.
Measurements and features are approximate and may differ from the actual property. Verify all details independently; no liability is accepted for errors or omissions.

Property marketing provided by www.fotomarketing.co.uk

Area Map



Energy Efficiency Graph



These particulars, whilst believed to be accurate are set out as a general outline only for guidance and do not constitute any part of an offer or contract. Intending purchasers should not rely on them as statements of representation of fact, but must satisfy themselves by inspection or otherwise as to their accuracy. No person in this firm's employment has the authority to make or give any representation or warranty in respect of the property.